

■カラーは、カーボングレー／ホワイトのみとなります。

W-1

staff only	no smoking
staff only	post
toilet	office
gentlemen	bathroom
ladies	kitchen

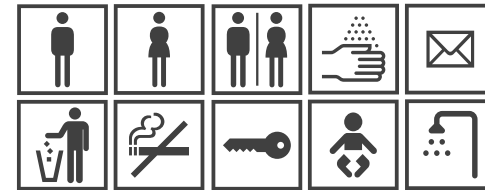
W-2

STAFF ONLY	NO SMOKING
STAFF ONLY	POST
TOILET	OFFICE
GENTLEMEN	BATHROOM
LADIES	KITCHEN

N-1

111222	111222
333444	333444
555666	555666
777888	777888
999000	999000
((((((((((
+ + + * * *	+ + + * * *

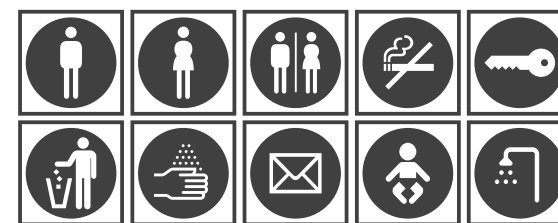
P-1



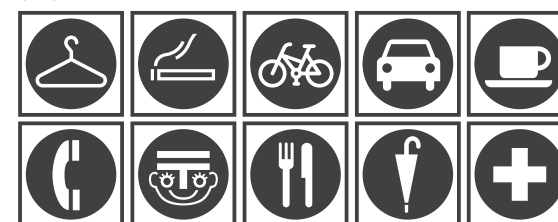
P-2



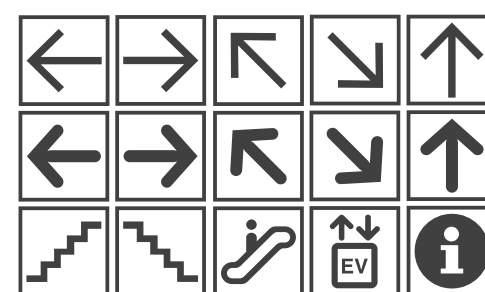
P-3



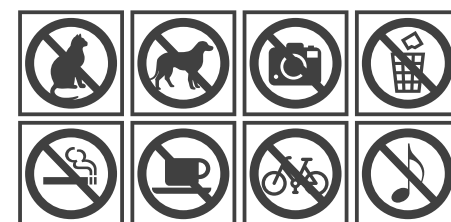
P-4



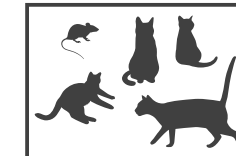
P-5



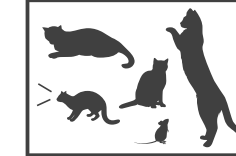
P-6



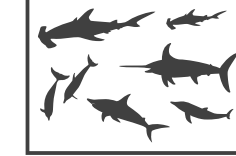
A-1



A-2



A-3



A-4

