

■カラーは、カーボングレー／ホワイトのみとなります。

W-1

staff only	gentlemen
staff only	ladies
bathroom	post
no smoking	office
toilet	kitchen

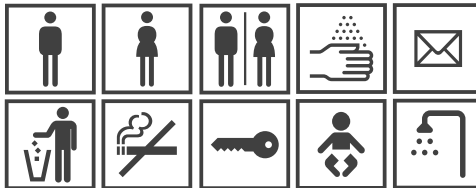
W-2

STAFF ONLY	GENTLEMEN
STAFF ONLY	LADIES
BATHROOM	POST
NO SMOKING	OFFICE
TOILET	KITCHEN

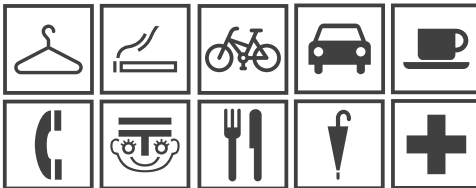
N-1

111222	111222
333444	333444
555666	555666
777888	777888
999000	999000
(((()))	(((()))
+++**	+++**

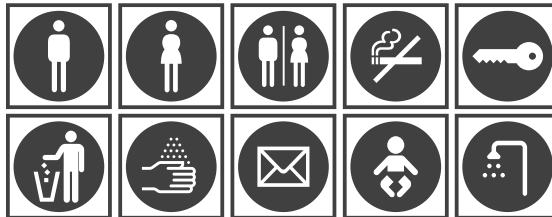
P-1



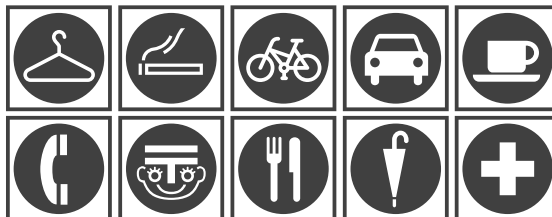
P-2



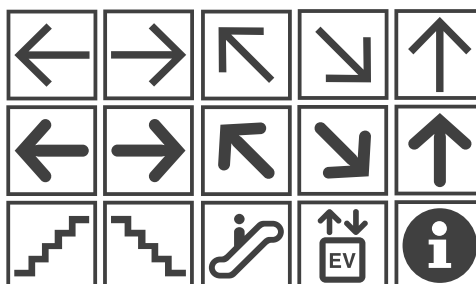
P-3



P-4



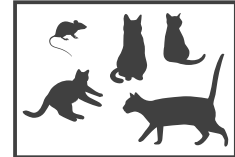
P-5



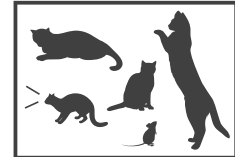
P-6



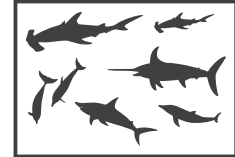
A-1



A-2



A-3



A-4

